



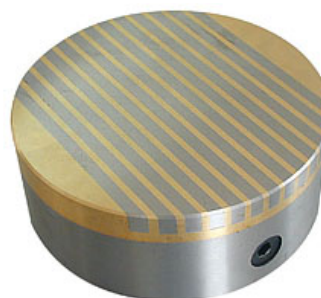
PRODUCT INFORMATION

AMF Magnetics
 ABN 57 504 457 740
 Unit 6, 54 Chegwyn Street BOTANY NSW 2019
 Phone (02) 9700 0055 Fax (02) 9700 0222
 Email sales@magnet.com.au
 Web www.magnet.com.au

MAGNETIC CHUCKS

- AMF Magnetics Circular or Square chucks are an excellent workholding jig, particularly when you are grinding, milling or cutting.
- With a removable handle, you can easily adjust the magnetic strength for fine movement or positioning of the article that you are holding.
- Our range of magnetic chucks come in two shapes, circular or square from sizes 100 to 300mm diameter.

PART NO.	DESCRIPTION	Unit Price
MCR10	100mm Diameter Circular Chuck	\$478.00
MCR15	150mm Diameter Circular Chuck	\$740.00
MCR20	200mm Diameter Circular Chuck	\$1160.00
MCR25	250mm Diameter Circular Chuck	\$1581.00
MCR30	300mm Diameter Circular Chuck	\$1841.00
MSQ20	100x200x45mm Square Magnetic Chuck	\$581.00
MSQ25	125x250x45mm Square Magnetic Chuck	\$740.00
MSQ30	150x300x45mm Square Magnetic Chuck	\$850.00



- All prices excluding GST
- Freight extra